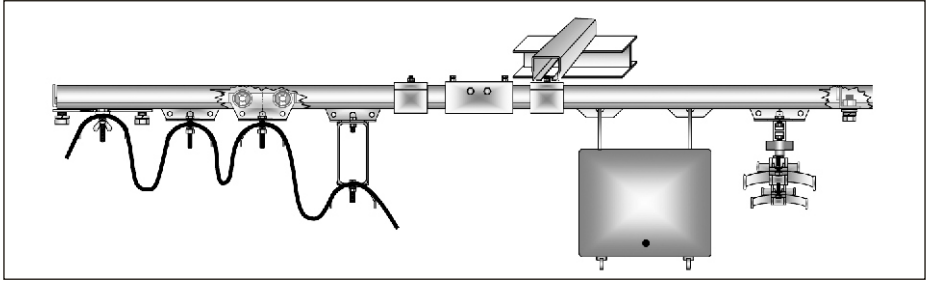
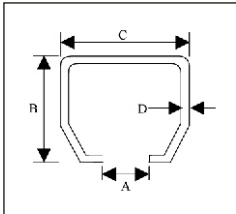


### 3.4 C-TRACK SYSTEM-*LIGHT DUTY*



**3-CT/0100 – LD C-TRACK RAIL**

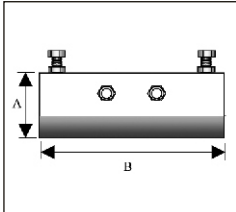


A	11
B	30
C	32
D	1.6
Weight=6.2kg/5m	
Supply lengths = 5m	



Permissible area load/m 3-CT/0100	SUPPORT SPACING						
	m	1	1.5	2	2.5	3	3.5
kg	25	20	15	10	7	3	

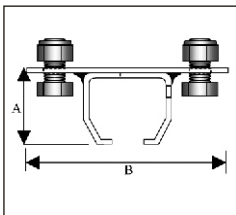
**3-CT/0200 – LD JOINT SET**



Material Galvanized steel  
 Weight 0.295kg  
 Application To join rail sections  
 A = 38  
 B=100



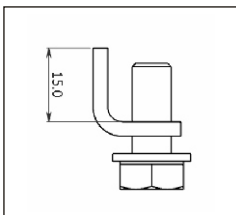
**3-CT/0300 – LD RAIL SUPPORT**



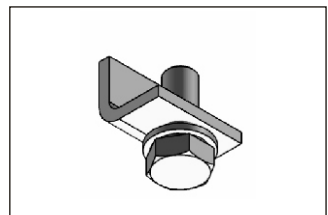
Material Galvanized steel  
 Weight 0.29kg  
 Max load 63kg  
 Application To support C-rails  
 A = 32  
 B=80



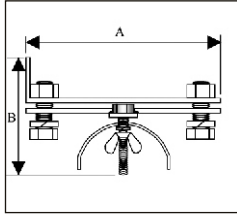
**3-CT/0400 – LD END STOP**



Material Galvanized steel  
 Weight 0.044kg  
 A = 20  
 B = 32

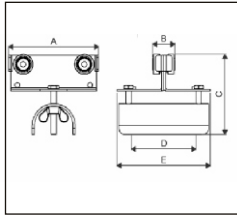


## 3.4 C-TRACK SYSTEM-*LIGHT DUTY*



### 3-CT/0500 – END CLAMP

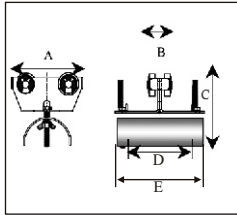
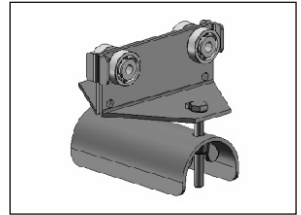
Material	Galvanized steel
Weight	0.292kg
	A = 80
	B = 70



### 3-CT/0600 – C-TRACK CARRIER type MDS CARRIER 95/F

Material	2mm galvanized steel
Rollers	Sealed ball bearings
Cable Width	68mm
Weight	0.490 kg
Max cable load	22kg/carrier

A = 103	B = 25	C = 100
D = 75	E = 103	



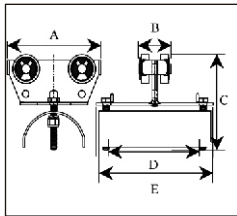
### 3-CT/0610 – C-TRACK CARRIER type LDL CARRIER 50/F

Material	2mm galvanized steel
Rollers	Sealed ball bearings
Cable width	30

Weight	0.267kg
--------	---------

Max cable load 22kg/carrier

A = 65
B = 25
C = 85
D = 30
E = 54



### 3-CT/0620 – C-TRACK CARRIER type MDL CARRIER 68/F

Material	2mm galvanized steel
Rollers	Sealed ball bearings
Cable width	68

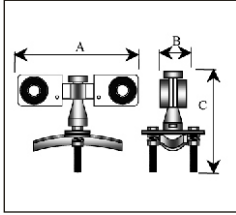
Weight	0.385kg
--------	---------

Max cable load 22kg/carrier

A = 85
B = 25
C = 85
D = 68
E = 94



### 3.4 C-TRACK SYSTEM-*LIGHT DUTY*



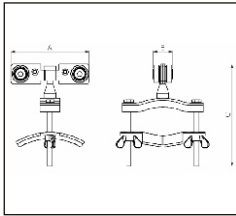
**3-CT/0630 – C-TRACK CARRIER**  
**type LSL CARRIER LD 24R**

Material 2mm galvanized steel  
 Rollers Sealed ball bearings  
 Cable width 8 - 20 mm

Weight 0.490kg

Max cable load 22kg/carrier

A = 103  
 B = 28  
 C = 55



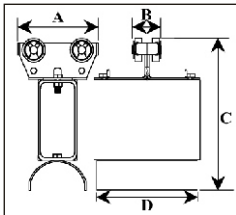
**3-CT/0650 – C-TRACK CARRIER**  
**type HSL CARRIER HD 50R**

Material 2mm galvanized steel  
 Rollers Sealed ball bearings  
 Cable width 15 - 35 mm

Weight 0.490kg

Max cable load 22kg/carrier

A = 85  
 B = 25  
 C = 67



**3-CT/0710 – LD MASTER CARRIER**

Material 2mm galvanized steel  
 Rollers Sealed ball bearings

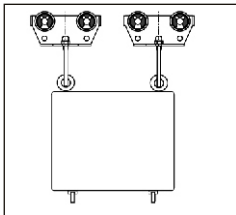
Weight 0.730kg

A = 85  
 B = 25  
 C = 165  
 D = 54



\* Master box available separately

\* Also available in: 3-CT/0710 - LDL MASTER CARRIER  
 3-CT/0720 - MDL MASTER CARRIER



**3-CT/0820 - MDL MOBILE BOX ASSEMBLY**

Material Galvanized steel

Weight 2.3kg

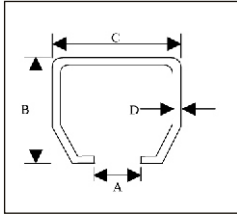
Max load 44k

\* Mobile box available separately



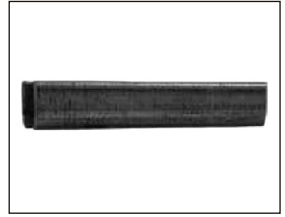
- Note – It is recommended to use strain relief rope/chain between the carriers to prevent damage to the cables.  
 For support brackets, see page 19.
- When designing a festoon system, the ambush area/parking area must be taken into account.
- **Light Duty C-track system also available in Stainless Steel**

# 3.5 C-TRACK SYSTEM-HEAVY DUTY

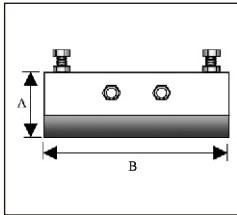


## 3-BC/0100 – BIG C-TRACK RAIL

A	14.5
B	36
C	41
D	2
Weight=9.9kg/5m	
Supply lengths = 5m	

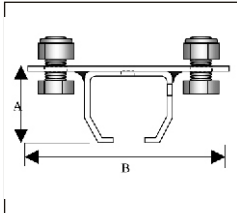


PERMISSIBLE AREA LOAD/m	SUPPORT SPACING						
	m	1	1.5	2	2.5	3	3.5
3-BC/0100	Kg	35	30	25	20	15	8



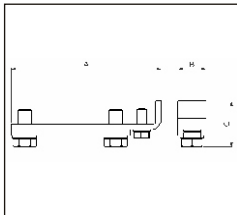
## 3-BC/0200 – HD JOINT SET

Material Galvanized steel  
 Weight 0.41kg  
 Application To join rail sections  
 A = 43  
 B = 125



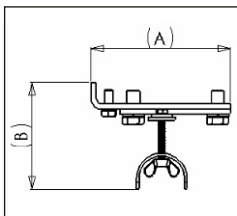
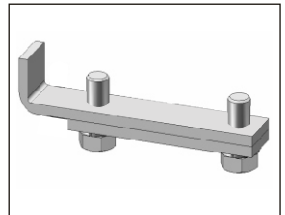
## 3-BC/0300 – HD RAIL SUPPORT

Material Galvanized steel  
 Weight 0.49kg  
 Max load 108kg  
 Application To support C-rails  
 A = 47  
 B = 110



## 3-BC/0400 – HD END STOP

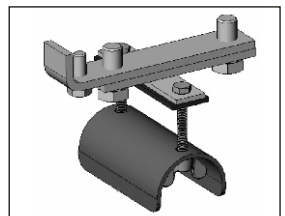
Material Galvanized steel  
 Weight 0.33kg  
 A = 157  
 B = 25  
 C = 42



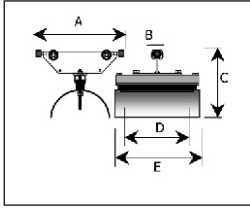
## 3-BC/0500 – HD ANCHOR DOME SET

Material Galvanized steel

MD	HD
Weight 0.53kg	Weight 0.98kg
A = 145	A = 145
B = 95	B = 160



## 3.5 C-TRACK SYSTEM-HEAVY DUTY



### 3-BC/0600 – CARRIER TYPE EHD 200/F

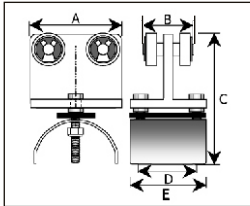
Material galvanized steel  
 Rollers Sealed ball bearings

Weight 1.850kg

Maximum load 55kg



A = 235  
 B = 30  
 C = 206  
 D = 160  
 E = 198



### 3-BC/0610 – LDH CARRIER LD 30/F

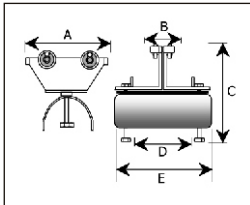
Material galvanized steel  
 Rollers Sealed ball bearings

Weight 0.270kg

Maximum load 28kg



A = 65  
 B = 33  
 C = 90  
 D = 30  
 E = 55



### 3-BC/0620 – MDH CARRIER MD 68/F

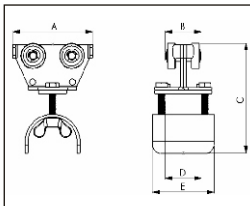
Material galvanized steel  
 Rollers Sealed ball bearings

Weight 0.433kg

Maximum load 28kg



A = 85  
 B = 33  
 C = 90  
 D = 68  
 E = 90



### 3-BC/0630 – C-TRACK HDH CARRIER HDH 80/F

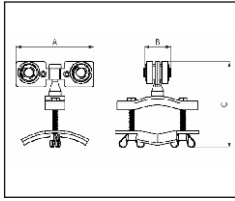
Material Galvanized steel

Weight 1.15kg



A = 150  
 B = 33  
 C = 160  
 D = 80  
 E = 123

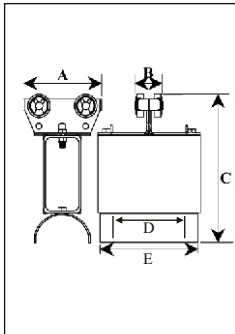
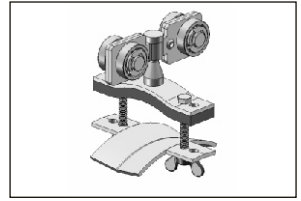
## 3.5 C-TRACK SYSTEM- HEAVY DUTY



### 3-BC/0650 – HSLSWIVEL CARRIER HS 50/R

PLEASE STATE CABLE DIAMETER UPON ORDER

Material mm galvanized steel  
 Rollers Sealed ball bearings  
 Cable Width 15-50mm  
 Weight 0.850kg  
 Maximum load 30kg/Carrier  
 A = 85 B = 25 C = 67



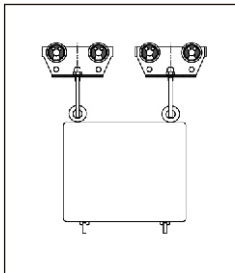
### 3-BC/0720 – HD MASTER CARRIER

Material mm galvanized steel  
 Rollers Sealed ball bearings

MDH	HDH
Weight 1.10kg	Weight 1.70kg
A = 85	A = 150
B = 33	B = 33
C = 170	C = 200
D = 68	D = 80
E = 120	E = 120

\* Master box available separately  
 \* Also available in:

**3-BC/0710 LDH MASTER CARRIER**  
**3-BC/0720 MDH MASTER CARRIER**  
**3-BC/0730 HDH MASTER CARRIER**



### 3-BC/0820 – HD MOBILE BOX

Material Galvanized steel

Weight 3.4kg

Max load 100kg

\* Mobile box available separately

\*Also available in:

3-BC/0820 MDH MOB. BOX ASSEMBLY  
 3-BC/0830 HDH MOB. BOX ASSEMBLY



Note – It is recommended to use strain relief rope/chain between the carriers to prevent damage to the cables.

For support brackets, see page 19 .

– When designing a festoon system, the ambush area/parking area must be taken into account.

– **Heavy Duty C-track system also available in Stainless Steel**