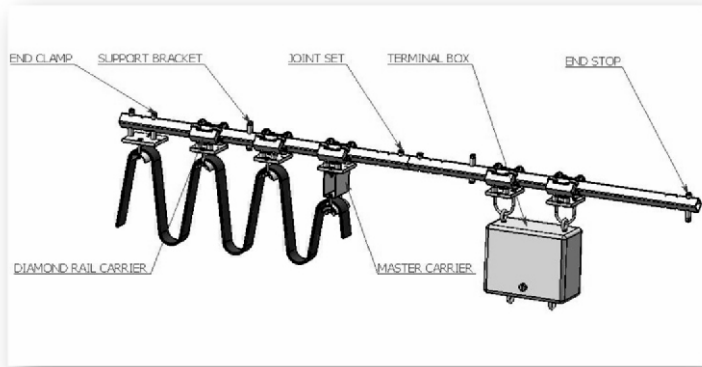
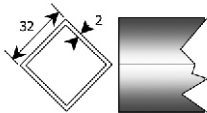


## 3.6 DIAMOND SYSTEM



### Applications:

1. Very dusty/dirty environments
2. Applications where rail must be bent around curve
3. Medium to heavy duty.



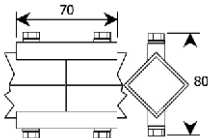
### 3-DT/0100 – DIAMOND RAIL

Material 2mm galvanized steel  
 Supply lengths 6 meters  
 Weight 11kg  
 Min bending radius 1500mm



#### Other support centres and permissible area loads

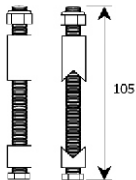
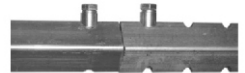
Support spacing	1m	1.5m	2m
Permareload/m	50kg	40kg	30kg



### 3-DT/0200 – JOINT SET

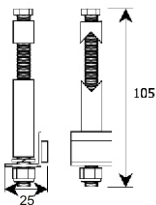
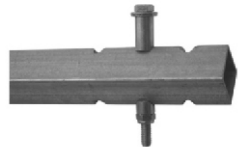
#### 3-DT – REPAIR JOINT 0200 SIT

Material Galvanized steel  
 Weight 0.125kg  
 Application To join rail sections



### 3-DT/0300 – RAIL SUPPORT

Material Galvanized steel  
 Weight 0.11kg  
 Application To support rail sections



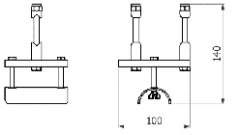
### 3-DT/0400 – END STOP

Material Galvanized steel  
 Weight 0.12kg



**Diamond rail system also available in Stainless Steel**

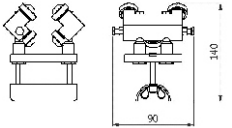
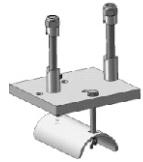
## 3.6 DIAMOND SYSTEM



### 3-DT/0520-ENDCLAMP

Material Galvanized steel

Weight 0.70 kg



### 3-DT/0620 MD – DIAMOND RAIL CARRIER

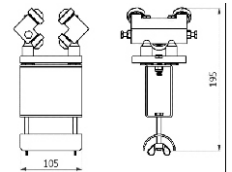
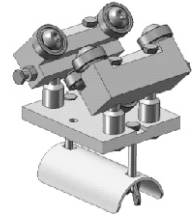
Material Galvanized steel  
Sides = aluminium castings

Rollers Sealed ball bearings

Load capacity 40kg

Weight 1.190 kg

Maxspeed 80m/min



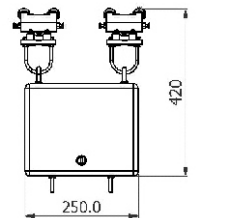
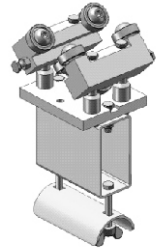
### 3-DT/0720 MD – MASTER CARRIER

Material Galvanized steel  
Sides = aluminium castings

Rollers Sealed ball bearings

Load capacity 40kg

Weight 1.598 kg



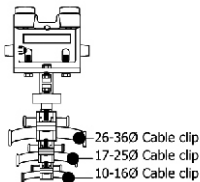
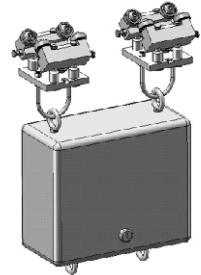
### 3-DT/0820 MD – MOBILE BOX C/W CARRIERS

Material Galvanized steel

Load capacity 40kg

Weight 5.9kg

Application Carry pendant cable and pendant station



### CARRIER FOR ROUND CABLE

Material Galvanized steel

Weight +- 1.42kg depending on the assembly

Application Specially for use on round cables and air/hydraulic hoses

Max load 40kg



### 3-DT/0300 AP - ADJUSTING BRACKET

Material Galvanized steel

Application: Used to align rail and hangers where brackets are difficult to align, eg where system has bends

Note – It is recommended to use strain relief rope/chain between the carriers to prevent damage to the cables.

For support brackets, see page 19.

**- When designing a festoon system, the ambush area/parking area must be taken into account.**